



**CRESTLINER**

FORGED WITH STRENGTH. DEFINED BY DURABILITY.







# ***A LIFESTYLE BUILT ON EXPERIENCE.***

The Crestliner Rally is the ideal combination of on-the-water comfort and performance. Expert durability and craftsmanship are evident from bow to stern, as is the Rally's premium style and intuitive functionality. It's what you should expect from over 70 years of boat-building expertise. So grab your gear and head out with family and friends. Then sit back and relax or start getting on the fish. Either way, let the Rally transform a typical day on the water into something a whole lot more.

2	Advantages	8	Rally/Rally DX FC
4	Rally & Rally DX	9	Rally/Rally DX FS
5	Rally/Rally DX CS	10	Key Features & Popular Options
6	Rally/Rally DX CW	11	Color & Flooring Options
7	Rally/Rally DX CWDH	12	Floorplans & Specifications



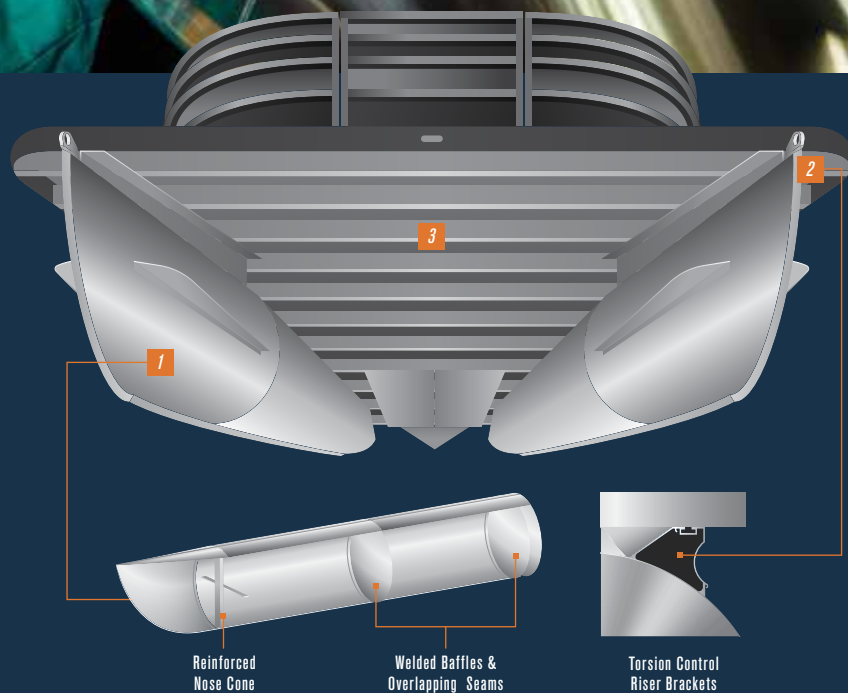


THE **CRESTLINER** ADVANTAGE

# FORGED WITH STRENGTH. DEFINED BY DURABILITY.

Take a look at the Crestliner Rally pontoon series and one thing becomes very clear: it isn't like other pontoons. The Rally is purpose built, with an unwavering commitment to perfecting every detail using top-of-the-line materials and advanced construction methods.

It all starts with the Rally's solid foundation. First, high-grade sheets of aluminum are rolled into the durable pontoon tubes. Torsion control riser brackets and a crossmember system are welded to the tubes, giving the pontoon its structure and supporting the weight of the deck up. All that work underneath makes for an even better experience atop the Rally. Durable, handcrafted furniture delivers maximum comfort while premium audio and unique amenities round out the Rally experience.



## 1 **REINFORCED PONTOON TUBES**

The Rally's 25" and 27" tube chambers overlap and are locked together with a fully welded seam, creating a rock solid bond. Baffles are welded into each chamber for added strength and a tighter seal. In the event of puncture, the sealed chambers keep the pontoon afloat.

## 2 **TORSION CONTROL RISER BRACKETS**

The unique concave design of the Rally's torsion control riser brackets absorb the impact of waves and rough water while reducing stress on tubes and deck, ensuring a durable connection point.

## 3 **OPTIMIZED CROSSMEMBERS**

The crossmembers are optimally spaced on the torsion control riser brackets to provide calculated support on weight-bearing loads where it's needed. Butyl rubber tape is applied on top of every crossmember creating a cushion and acting as an insulator from waves or rough water.

# THREE TUBES TO UPGRADE YOUR PERFORMANCE.

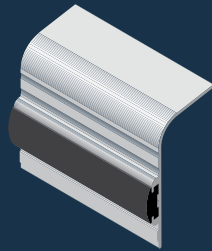


## MARINE-GRADE DECK

The marine-grade deck is secured to crossmembers using Tek® screws. Unlike bolts that can stretch and loosen over time, Tek® screws create a solid and secure deck. Urethane sealant is used on wood seams to prevent water penetration.

## RUB RAIL SYSTEM

The crossmembers extend near the rub rail providing additional support in case of impact. The rub rail system will take the abuse of impact helping protect the structural integrity of the deck.



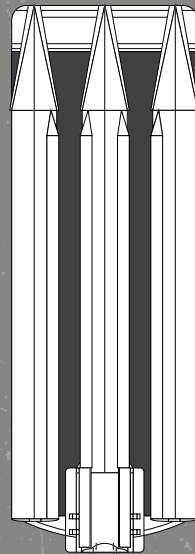
## PREMIUM FURNITURE

Durable, rotomolded bases include integrated under-seat storage with drainage channels, while handcrafted furniture delivers maximum comfort in two ways: standard (Rally) and pillow top (Rally DX, shown).



## BACKED BY OUR LIFETIME +5 WARRANTY

Receive a limited lifetime warranty on pontoon tubes, crossmembers, decking, motor mount and fence rails. Plus, a 5-year bow-to-stern warranty on virtually everything else. It only gets better from there: Crestliner's warranty transfers to future owners. (See warranty for details.)



## V3 ACTION PACKAGE

The V3 Action Package takes pontoon performance to the next level with a third tube for increased speed and watersports opportunities while adding V-hull stability. This full-length center tube adds buoyancy and rigidity allowing you to add a larger horsepower motor, increase passenger capacity and give you greater control in rough water. Additionally, the V3 Action Package adds full-length lifting strakes to all three tubes for faster, smoother planing.

- Reinforced Nose Cone for Rough Water
- Full-Length Keels
- Full-Length Lifting Strakes
- Full Aluminum Underdeck Skin
- GPS-Driven Speedometer (Standard on Rally DX models)
- 37-Gallon Fuel Tank

Available with 25" or 27" diameter pontoon tubes

## V3 SKI PACKAGE

The V3 Ski Package delivers on all of the performance features of the V3 Action Package, adding the stainless steel ski tow bar and massive in-floor storage for skis and boards.





Rally



Rally DX

## THERE'S MORE THAN ONE WAY TO RALLY.

The Rally is available in two models, the Rally and the Rally DX. We've paid attention to every detail of our Rally's look and functionality. With the Rally DX, we took it a step further with a more sophisticated aesthetic quality and higher end standard features like plush pillow top furniture and a redesigned helm.

Once you've selected your Rally, choose your floorplan and options to make your Rally truly yours.

### RALLY KEY FEATURES



Chaise Lounge Furniture  
(Shown in Beige)

Deluxe Fish Seats (FC, FS)  
Aluminum Corner Caps  
Stainless Steel Cleats



Lowback Helm Chair  
(Shown in Gray)

MB Quart Stereo with 2 Speakers  
Aluminum Polished Steering Wheel  
Domed Logo



4-Step Ladder with Platform

Non-tilt Steering



Helm Station  
(Shown in Beige)

### RALLY DX KEY FEATURES



Pillow Top Chaise Lounge  
Furniture (Shown in Gray)

Pro Fish Seats (FC, FS)  
Billet Aluminum Corner Caps  
Stainless Steel Flip Up Cleats



Pillowtop Highback Reclining  
Helm Chair (Shown in Beige)

MB Quart Stereo with 4 Speakers  
Premium Aluminum Polished  
Steering Wheel



4-Step Stainless Steel  
Telescoping Ladder

3D Chrome Logo  
Tilt Steering  
Docking & Courtesy Lights



Premium Helm Station  
(Shown in Gray)

GPS Speedometer  
Tube Accent Graphics  
(See Page 11)



220 Rally DX Cruise (CS)



Shown with NEW Raised Helm



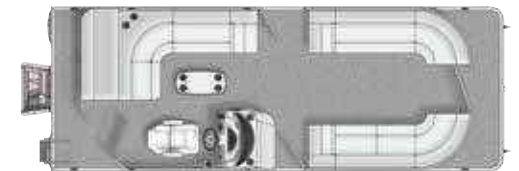
CS

CRUISE | 240 | 220 | 200

## CRUISE THROUGH THE DAY.

The CS offers everything you need for a perfect day on the water. Ample seating lines the perimeter of this pontoon's intuitive layout, making the ride as comfortable as it gets. The sunpad offers even more room to relax, while simultaneously providing extra storage space. From sunup to sundown, the CS lets you experience the best of what the day has to offer.

- *L-Chaise lounge furniture with table*
- *Sunpad with storage and space for optional changing room*
- *Spacious bow chaise lounge furniture*
- *Helm station equipped with a comfortable helm chair*



240 Rally Cruise (CS)

See pages 10-13 for additional features, options and floorplans.



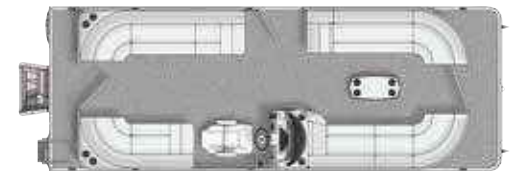
CW

CENTER WALKTHROUGH | 240 | 220 | 200

## WALK THROUGH COMPLETE COMFORT.

Maneuvering is easy and convenient, thanks to the CW's spacious center aisle. When you aren't walking about the CW, find a spot on one of the four plush chaise lounges and relax. Turn the key and you'll soon discover that complete comfort is always within reach.

- *Convenient walkthrough layout allows for plenty of movement throughout the deck*
- *Helm station equipped with a comfortable helm chair*
- *Four chaise lounges (two in front, two in back) that are perfect for sunning, lounging or entertaining*
- *Removable table with drink holders*



240 Rally Center Walkthrough  
(CW)

See pages 10-13 for additional features, options and floorplans.



240 Rally DX Center Walkthrough Dual Helm (CWDH)



Shown with V3 Action Package



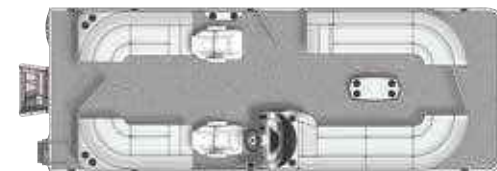
# CWDH

CENTER WALKTHROUGH DUAL HELM | 240 | 220 | 200

## ENJOYMENT FROM ANY SEAT.

With two captain's chairs lining either side of the open walkthrough design, the CWDH provides more room to relax and entertain. Additionally, the CWDH features an open floorplan similar to the CW and offers four chaise lounges in addition to the second helm seat. With the CWDH, you're sure to find pure enjoyment wherever you sit.

- *Convenient walkthrough layout allows for plenty of movement throughout the deck*
- *Helm station equipped with a comfortable helm chair*
- *Second helm chair provides versatility and maximum comfort*
- *Four chaise lounges (two in front, two in back) that are perfect for sunning, lounging or entertaining*
- *Removable table with drink holders*



240 Rally Center Walkthrough Dual Helm (CWDH)

See pages 10-13 for additional features, options and floorplans.



220 Rally Fish & Cruise (FC)



200 Rally DX (FC)



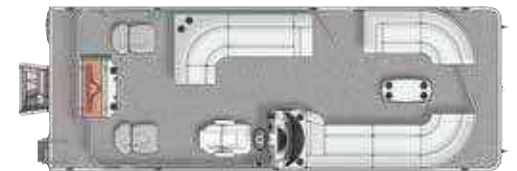
FC

FISH & CRUISE | 240 | 220 | 200

## CAST AND CATCH RAYS.

Whether you're dropping a line or just cruising around the lake, the FC delivers on its dual purpose. As comfortable as it is versatile, the FC features dual stern fishing seats and a pair of lounges in the bow. The FC also offers plenty of fishing features like a 15-gallon livewell, a lockable rod rack and an easy-access fishing ruler. It's as perfect for a morning full of fishing as it is for an afternoon spent cruising.

- *Dual stern fishing seats make for a better fishing experience*
- *Lockable, fully integrated rod rack system holds four 8' rods*
- *Easy access fish ruler with designated storage*
- *Fully featured stern fishing station*
- *Bow chaise lounges with table*
- *Helm station equipped with a comfortable helm chair*



240 Rally Fish & Cruise (FC)

Rod Storage  
Livewell

See pages 10-13 for additional features, options and floorplans.





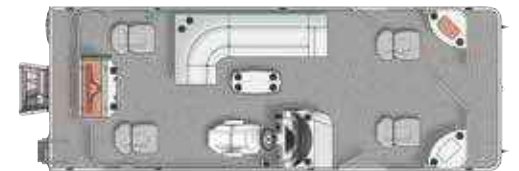
FS

FISH | 240 | 220 | 200

## FISH FROM EVERY POINT.

The FS is optimized for fishing at all four corners. The bow features angling stations that include drink and tool holders, a livewell and tackle tray storage. Stern anglers will find fishing-ready features like a 15-gallon livewell, vertical rod holders, integrated fish ruler and a unique lockable rod rack system that holds up to four 8' rods.

- *Four fishing seats provide maximum fishability for everyone on board*
- *Bow angling stations with drink holders, storage and 10-gallon livewell*
- *Lockable, fully integrated rod rack system holds four 8' rods*
- *Easy access fish ruler with designated storage*
- *Fully featured stern fishing station*
- *Helm station equipped with a comfortable helm chair*



240 Rally Fish (FS)

Rod Storage

Livewell

See pages 10-13 for additional features, options and floorplans.

# KEY FEATURES & POPULAR OPTIONS



**1** Helm with Highback Reclining Helm Chair  
(Shown in Beige) (Rally Standard Helm & Optional Chair,  
See page 4 for more Helm & Seating)

**2** Changing Room with Curtain  
(Optional on Rally & Rally DX, n/a on 220 & 200  
CWDH models)

**3** Ski Tow Bar  
(Optional on Rally & Rally DX)



**4** Woodgrain Table with Drink Holders  
(Also available in Gray) (Optional on Rally; Standard on Rally DX)

**5** Sport Graphic  
(Optional Rally & Rally DX, Tube Accent Graphics  
Standard on Rally DX.)

**6** Bimini Top  
(10' Standard on Rally & Rally DX; 12', 12' Lighted &  
Double Bimini Tops Optional)



**7** Black Anodized Rails  
(Optional on Rally & Rally DX)

**8** 10-Gallon Livewell (Furniture Drop-in)  
(Optional on Rally & Rally DX)

**9** Fishing Station featuring 15-Gallon Livewell with  
Light & Pump, Vertical Rod Storage & More  
(Standard on Rally & Rally DX FC & FS models)



**10** Deluxe Seat (Shown in Gray)  
(Standard on Rally FC & FS models)

**11** Pro Seat (Shown in Beige)  
(Standard on Rally DX FC & FS models)

**12** Locking Rod Storage  
(Standard on Rally & Rally DX FC & FS models)



# COLOR & FLOORING OPTIONS

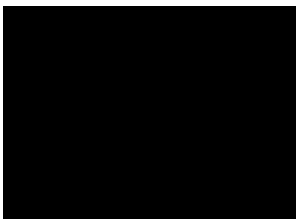
## FENCE & ACCENT COLORS



Carbon Steel (Fence & optional accent color)



Nautical Blue (Fence & optional accent color)



Onyx Black (Fence & optional accent color)



Canyon Brown Metallic (Fence only)



White Fusion Metallic (Fence only)



Matte Black (Optional accent color only)

## GRAPHICS



Sport Graphic (Optional)



Tube Accent Graphic with Optional Tube Sport Graphic (Rally DX only)

## RAILS

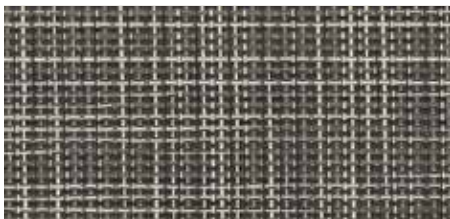


Silver Anodized Rails (Standard)

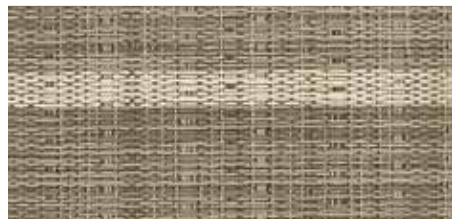


Black Anodized Rails (Optional)

## FLOORING



Seagrass, Gray (Standard)



Woven Teak Supreme, Gray (Optional)



Weathered Teak, Gray (Optional)



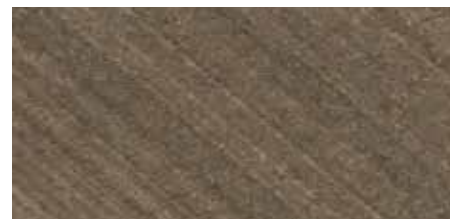
Vinyl, Gray (Optional)



Seagrass, Beige (Standard)



Woven Shadow Diamonds, Beige (Optional)



Beachwood Vinyl, Beige (Optional)



Vinyl, Beige (Optional)

# FLOORPLANS & SPECIFICATIONS

CS

CW

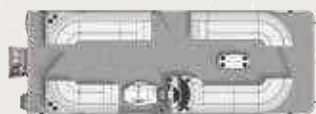
CWDH

FC

FS



CS 240



CW 240



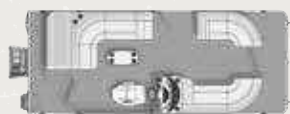
CWDH 240



FC 240



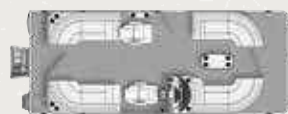
FS 240



CS 220



CW 220



CWDH 220



FC 220



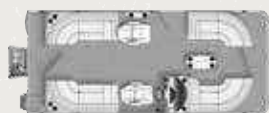
FS 220



CS 200



CW 200



CWDH 200



FC 200



FS 200

SPECIFICATIONS	240		220		200	
Overall Length (Includes ladder)	25'9"	7.85 m	23'5"	7.14 m	22'1"	6.73 m
Pontoon Length	24'	7.32 m	22'	6.71 m	20'	6.10 m
Pontoon Diameter (.080 gauge)	25"	63.50 cm	25"	63.50 cm	25"	63.50 cm
Beam	8'6"	2.59 m	8'6"	2.59 m	8'6"	2.59 m
Weight (2 tubes/3 tubes)	2,705/3,400#	1,227/1,542 kg	2,495/3,010#	1,132/1,365 kg	2,265/2,560#	1,027 kg/1,161 kg
Max Weight Capacity* (2 tubes/3 tubes)	2,314/2,679#	1,050/1,215 kg	2,073/2,410#	940/1,093 kg	1,918/2,222#	870/1,007 kg
Max Person Weight Capacity* (2 tubes/3 tubes)	12-13/14-15	12-13/14-15	10-11/12-13	10-11/12-13	9-10/11	9-10/11
Max HP Capacity (2 tubes/3 tubes)	150/200	150/200	150/200	150/200	115/150	115/150
Fuel Capacity (2 tubes/3 tubes)	28/37 gal	106/140 L	28/37 gal	106/140 L	28/37 gal	106/140 L
Draft Up/Draft Down	12"/21"	31 cm/53 cm	12"/21"	31 cm/53 cm	12"/21"	31 cm/53 cm
Bimini Clearance (Bimini and stern lights down)	62"	158 cm	62"	158 cm	62"	158 cm

All Models: Storage below all lounge furniture

FC & FS: Rod Storage Livewell

\*Note: Max capacity = person + motor + gear.  
Engine size affects capacity. Tube diameter also changes capacity.



FLOORPLAN	RALLY					RALLY DX				
	CS	CW	CWDH	FC	FS	CS	CW	CWDH	FC	FS
SEATING										
Helm Seat with Slider & Swivel (Lowback, Non-Reclining / Highback Recliner)	STD / OPT	STD / OPT	STD / OPT	STD / OPT	STD / OPT	- / STD	- / STD	- / STD	- / STD	- / STD
Deluxe / Pro Fishing Seats	- / -	- / -	- / -	STD (2) / -	STD (4) / -	- / -	- / -	- / -	- / STD (2)	- / STD (4)
Chaise Lounge Chairs / Pillow Top Chaise Lounge Chairs	STD / -	STD / -	STD / -	STD / -	STD / -	- / STD	- / STD	- / STD	- / STD	STD / -
Adjustable Height Seat Base	OPT	OPT	OPT	OPT	OPT	OPT	OPT	OPT	OPT	OPT
HELM										
Raised Helm	-	-	-	-	-	OPT	OPT	OPT	OPT	OPT
Gauges, Analog (Tachometer, Trim, Fuel)	STD	STD	STD	STD	STD	STD	STD	STD	STD	STD
Speedometer, GPS Driven	OPT	OPT	OPT	OPT	OPT	STD	STD	STD	STD	STD
Depthsounder, Digital	OPT	OPT	OPT	OPT	OPT	OPT	OPT	OPT	OPT	OPT
Premium Steering Wheel	OPT	OPT	OPT	OPT	OPT	STD	STD	STD	STD	STD
Windscreen (Removable)	STD	STD	STD	STD	STD	STD	STD	STD	STD	STD
MB Quartz Stereo with 2 Speakers / with 4 Speakers & Deck Remote	STD / OPT	STD / OPT	STD / OPT	STD / OPT	STD / OPT	- / -	- / -	- / -	- / -	- / -
MB Quartz Stereo with 4 Speakers / with 6 Speakers, Deck Remote, Sub Woofer & Amplifier	- / -	- / -	- / -	- / -	- / -	STD / OPT	STD / OPT	STD / OPT	STD / OPT	STD / OPT
STEERING										
Hydraulic Steering / Xtreme Steering / Panther Power Steering	OPT / OPT / OPT	OPT / OPT / OPT	OPT / OPT / OPT	OPT / OPT / OPT	OPT / OPT / OPT	OPT / OPT / OPT	OPT / OPT / OPT	OPT / OPT / OPT	OPT / OPT / OPT	OPT / OPT / OPT
Mercury Active Trim	OPT	OPT	OPT	OPT	OPT	OPT	OPT	OPT	OPT	OPT
Tilt Steering (Included with Hydraulic & Xtreme Steering)	OPT	OPT	OPT	OPT	OPT	STD	STD	STD	STD	STD
FISHING FEATURES										
Fishing Station*	-	-	-	STD	STD	-	-	-	STD	STD
Bow Angling Stations with 10 gallon Livewell & Tackle Storage	-	-	-	-	STD	-	-	-	-	STD
Livewell, 10 Gallon Furniture Drop-in	OPT	OPT	OPT	OPT	OPT	OPT	OPT	OPT	OPT	OPT
Locking Rod Storage (4 Tubes @ 8' Capacity)	-	-	-	STD	STD	-	-	-	STD	STD
Rod Holders (Rail Mount)	-	-	-	STD (2)	STD (4)	-	-	-	STD (2)	STD (4)
Lowrance Hook 4 Fishfinder / Simrad G06 or G07	OPT / -	OPT / -	OPT / -	OPT / -	OPT / -	- / OPT	- / OPT	- / OPT	- / OPT	- / OPT
Half-Gate (Trolling Motor Outlet & Harness, Bow)	OPT	OPT	OPT	OPT	OPT	OPT	OPT	OPT	OPT	OPT
COLORS & GRAPHICS										
Accent Fence Color (Carbon Steel, Nautical Blue, Onyx Black, Matte Black)	OPT	OPT	OPT	OPT	OPT	OPT	OPT	OPT	OPT	OPT
Anodized Rails, Rub Rail & Bimini Frame (Silver / Black)	STD / OPT	STD / OPT	STD / OPT	STD / OPT	STD / OPT	STD / OPT	STD / OPT	STD / OPT	STD / OPT	STD / OPT
Sport Graphic / Tube Accent Graphics	OPT / -	OPT / -	OPT / -	OPT / -	OPT / -	OPT / STD	OPT / STD	OPT / STD	OPT / STD	OPT / STD
ACCESSORIES										
Changing Room with Curtain	OPT	OPT	OPT (240 only)	OPT	OPT	OPT	OPT	OPT (240 only)	OPT	OPT
Docking Lights / Courtesy Lights	OPT / OPT	OPT / OPT	OPT / OPT	OPT / OPT	OPT / OPT	STD / STD	STD / STD	STD / STD	STD / STD	STD / STD
Lighting Package (Rope Lights, Lighted Speakers & Drink Holders)	OPT	OPT	OPT	OPT	-	OPT	OPT	OPT	OPT	-
Ski Tow Bar	OPT	OPT	OPT	OPT	OPT	OPT	OPT	OPT	OPT	OPT
4-Step Stainless Steel Telescoping Ladder	STD / OPT	STD / OPT	STD / OPT	STD / OPT	STD / OPT	- / STD	- / STD	- / STD	- / STD	- / STD
Stainless Steel Cleats / Stainless Steel Flip-up Cleats	STD / OPT	STD / OPT	STD / OPT	STD / OPT	STD / OPT	- / STD	- / STD	- / STD	- / STD	- / STD
Table with 4 Drink Holders / Upgraded Woodgrain Table with 2 Drink Holders	STD / OPT	STD / OPT	STD / OPT	STD / OPT	STD / OPT	- / STD	- / STD	- / STD	- / STD	- / STD
CANVAS COVERS										
Mooring Cover (Snapless)	STD	STD	STD	STD	STD	STD	STD	STD	STD	STD
Bimini Top 10'	STD	STD	STD	STD	STD	STD	STD	STD	STD	STD
Bimini Top, Double	OPT	OPT	OPT	OPT	OPT	OPT	OPT	OPT	OPT	OPT
Bimini Top 12' / 12' Lighted	OPT / OPT	OPT / OPT	OPT / OPT	OPT / OPT	OPT / OPT	OPT / OPT	OPT / OPT	OPT / OPT	OPT / OPT	OPT / OPT
Full Enclosure (Double Bimini, Front, Side & Aft Curtains)	OPT	OPT	OPT	OPT	OPT	OPT	OPT	OPT	OPT	OPT
PERFORMANCE & CONSTRUCTION										
27" Tubes	OPT	OPT	OPT	OPT	OPT	OPT	OPT	OPT	OPT	OPT
Keel (Full Length Extruded) / Lifting Strakes	OPT / OPT	OPT / OPT	OPT / OPT	OPT / OPT	OPT / OPT	OPT / OPT	OPT / OPT	OPT / OPT	OPT / OPT	OPT / OPT
Skin Kit (Aluminum)	OPT	OPT	OPT	OPT	OPT	OPT	OPT	OPT	OPT	OPT
3 Tube Packages (V3 Action Package / V3 Ski Package)**	OPT / OPT	OPT / OPT	OPT / OPT	OPT / OPT	OPT / OPT	OPT / OPT	OPT / OPT	OPT / OPT	OPT / OPT	OPT / OPT
Rough Water Package / Saltwater Package	OPT / OPT	OPT / OPT	OPT / OPT	OPT / OPT	OPT / OPT	OPT / OPT	OPT / OPT	OPT / OPT	OPT / OPT	OPT / OPT

FLOORPLANS: CS= Cruise CW= Center Walk-Through CWDH=Center Walk-Through Dual Helm FC= Fish & Cruise FS= Fish  
 \* Fishing Station includes 15 gallon livewell with light & pump, washdown system, 4 vertical rod holders, tool holders & drink holders \*\* See page 3 for more information on 3 Tube Packages

These are just some of the features and options available. Please see the Crestliner website for more information. Some features/options may change based on layout. Every effort was made to ensure that this information was accurate at the time of printing. Crestliner assumes no responsibility for errors in type or in print.



**CRESTLINER**  
FORGED WITH STRENGTH. DEFINED BY DURABILITY.

9040 QUADAY AVE NE | OTSEGO, MN | 55330 | 866.301.8544

\*Not all processes, features and statements apply to every Crestliner pontoon model.

All prices and specifications subject to change. Crestliner reserves the right to discontinue models or change prices, specifications, materials, equipment, color or design at any time without notice and without incurring obligations. Some models are shown with optional features and equipment. Outboard model weights shown in this catalog reflect the approximate weight of the pontoon only, and do not include weights of the outboard motor or accessories installed. All pontoons meet or exceed United States Coast Guard regulations, applicable American Boat and Yacht Council standards and are certified by the National Marine Manufacturer's Association. Receive a limited lifetime warranty on pontoon tubes, crossmembers, decking, motor mount and fence rails. Plus, a 5-year bow-to-stern warranty on virtually everything else. It only gets better from there: Crestliner's warranty transfers to future owners. When its time to upgrade to a new Crestliner, you have the option to transfer the warranty to the second owner. Our proven welding techniques and innovations allow us to offer you one of the best warranties in the industry. Some restrictions apply. For complete details, a copy of our limited warranty is attached to each new pontoon or may be obtained from your Crestliner dealer. Many pontoons featured in this catalog are shown with available options. See your dealer for details. Every effort was made to ensure that this information was accurate at the time of printing. Crestliner assumes no responsibility for errors in type, in print or in photos. Please follow the rules of safe boating, be courteous to others and respect the marine environment. Special thanks to NMMA, Mercury, Onyx and Arrowwood Resort & Conference Center, Alexandria, MN.

©2018 Crestliner / A Brunswick boat company. Printed in USA